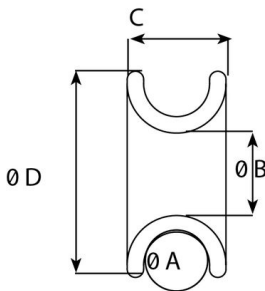


## FRX25 - Friction ring

Part #22517




### Description

Efficient and light  
FRX Wichard thimbles are efficient, light and reliable. Very strong, they can be used for heavy loads and semi-static lines. FRX thimbles are designed to make your lines run smoothly with minimum wear. They are hard anodized (50 microns) for a longer lifespan.

### Applications

Mast-foot block, barber-hauler, inhauler, loop, thimble, lazy jack, running backstay, tackle, and more.

## Technical information

Materials	Anodized aluminium
 Working load (lb)	11020
Weight (lb)	0.126
A (inch)	43/64"
B (inch)	63/64"
C (inch)	63/64"
D diameter (inch)	2 23/64"

### Caption



Working load (WL) : for nautical applications



Working Load Limit (WLL): for industrial applications only.  
The safety factor is 5 times the breaking load.  
WLL = Breaking load / 5

Wichard strives to ensure, to the best of its ability, the accuracy and the update of the information disseminated on this document, and reserves the right to correct at any time and without notice the content, as well as to evolve its products.

In the case of an industrial application, please contact our sales and technical department to validate the use of these products. The request for certificates can be made directly with the sales department when ordering the products.

Non-contractual pictures.