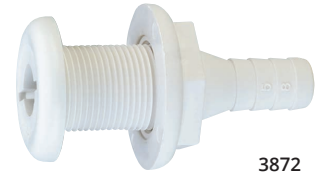


Plastic Thru-Hulls & Scupper Valve Fittings

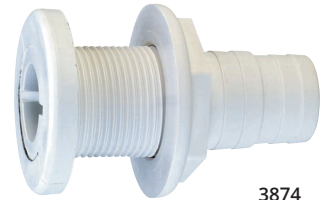
Thru-Hulls

Caution: Plastic Thru-Hull Connectors are designed for installation above the water line only.

Fits Hose Size	Stem Length	Max Hull Thickness	Flange Diameter	Installation Hole Size	Drain Plug	Construction	Color	OEM Part #	Part #
5/8" I.D.	3-1/4"	1-1/4"	1-3/4"	1-1/8"	5/8"	Polypropylene	White	3872-1	3872-3
							Black	3872A1	—
3/4" I.D.	3-1/4"	1-1/4"	1-3/4"	1-1/8"	5/8"	Polypropylene	White	3873-1	3873-3
							Black	3873A1	—
3/4" I.D.	4"	2"	2"	1-1/16" to 1-1/8"	5/8"?	Acetal	White	3896-1	3896-3
1-1/8" to 1-1/4" I.D.	3-1/4"	1-1/4"	2-1/4"	1-3/8"	7/8"	Polypropylene	White	3874-1	3874-3
							Black	3874A1	—
1-1/2" I.D.	3-1/2"	1-1/4"	3"	1-7/8" to 2"	7/8"	Polypropylene	White	3875-1	3875-3
							Black	3875A1	—
2" I.D.	3-1/2"	1-1/4"	3"	1-7/8" to 2"	7/8"	Polypropylene	White	3845-1	—



3872



3874



3875



3875B

Thru-Transom Thru-Hull Connector

For installation through the transom. Ideal for overflow use in livewell installations. Can be used with the 3876 Scupper Valve in self-bailing applications, or as an exhaust port for a bilge pump. Polypropylene construction.

Caution: Plastic Thru-Hull Connectors are designed for installation above the water line only.

Fits Hose Size	Stem Length	Max Hull Thickness	Flange Diameter	Installation Hole Size	Color	OEM Part #	Part #
1-1/2" I.D.	5-1/2"	3-1/8"	2-3/4"	2"	White	3875B1	—

Double Ended Thru-Hull Connector

Double-Ended Thru-Hull provides watertight transition through bulkheads or tanks. 5" overall length. Polypropylene construction.

Caution: Plastic Thru-Hull Connectors are designed for installation above the water line only.

Fits Hose Size	Max Hull Thickness	Installation Hole Size	OEM Part #	Part #
3/4" I.D.	1-1/8"	1-1/8"	3878-1	3878-3



3878

90° Thru-Hull Connectors

90° Thru-Hulls are ideal for tight installations, such as livewell overflow drains. Design eliminates hose kinking. Polypropylene construction.

Caution: Plastic Thru-Hull Connectors are designed for installation above the water line only.

Fits Hose Size	Max Hull Thickness	Flange Diameter	Installation Hole Size	Drain Plug	Color	OEM Part #	Part #
3/4" I.D.	1"	1-1/2"	1"	1/2"	White	3877-1	3877-3
					Black	3880-1	—
1-1/8" to 1-1/4" I.D.	1-7/8"	2-7/16"	1-5/16"	7/8"	White	3879-1	3879-3
					Black	3870-1	—



3877



3879