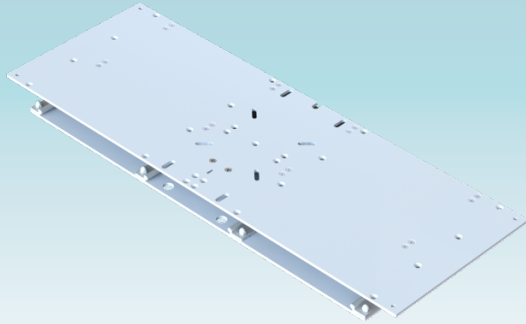


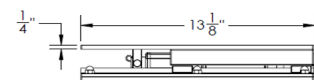
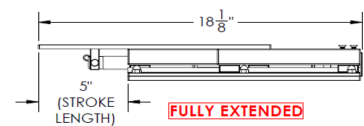
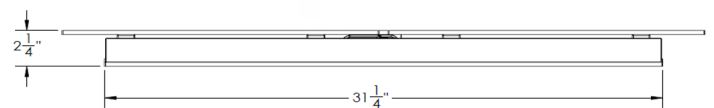
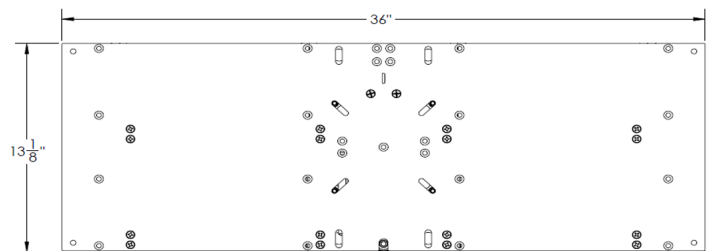
## ADJUSTABLE SEAT SLIDE KIT - M20-3613E



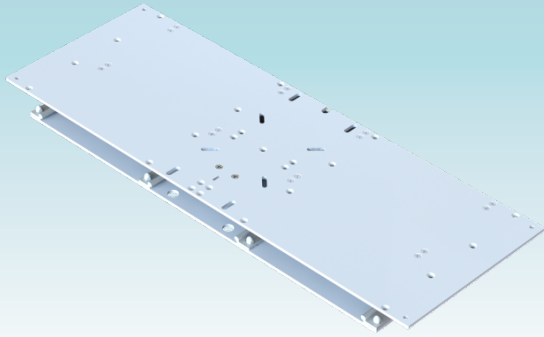
Introducing a fully electric Low Profile Adjustable Seat Slide! Perfect for seats 41" to 54" wide, this 13-1/8" X 36" electric seat slide travels up to 5" and can be stopped anywhere between its fully extended and retracted positions. M20-3613E is available to boat builders only. Contact your TACO Sales or Customer Service Representative for more information.

w tacomarine.com | ph 800.653.8568 | e info@tacomarine.com

- Ideal for seats 41" to 54"
- Features 5" of travel distance (stroke length)
- Water-resistant IP66 rating
- Meets H31 testing standards for seat applications
- Precision-machined 6000-series aluminum chassis
- Rail/Linear Glide system are self-lubricating, dirt resistant, quiet, corrosion free, light weight and shock resistant
- Low profile with secure fit with universal mounting bolt pattern on both pedestal and box applications
- Quiet operation ≤ 58dB
- Electric actuator
- Self-locking at any given position (at rated loads)
- No racking in any direction due to precision tolerances in the track/glide system
- All electric seat slides and components are acid etched clear anodized



PART NUMBER	DESCRIPTION	DIMENSIONS (L x W x H)	UNIT	PACK
M20-3613E	Electric Adjustable Seat Slide Kit	13.125 x 36 x 2.25	EA	1



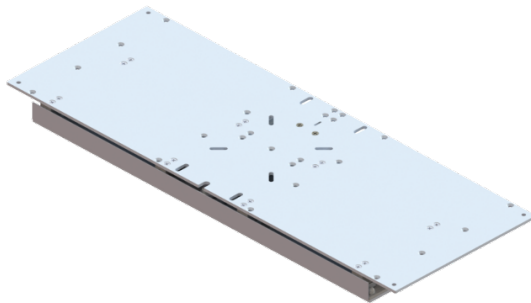
**FRONT VIEW**



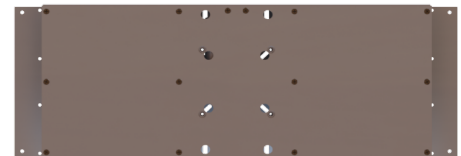
**TOP VIEW**



**SIDE VIEW**



**BACK VIEW**



**BOTTOM VIEW**