

GPSMAP® 79

GPS Handheld



PRODUCT OVERVIEW:

Cast off confidently with the GPSMAP 79s and GPSMAP 79sc marine GPS handhelds. These rugged, floating handhelds feature sunlight-readable, high-resolution color displays that are fogproof and scratch-resistant. You get access to a range of satellite constellations, so you get more reliable, accurate tracking around the world. Navigate wherever your adventures take you with options for worldwide basemap or built-in BlueChart® g3 coastal charts. With more memory than previous models, you can save and track 10,000 waypoints and 250 routes. Keep your bearings with the built-in compass.



GARMIN.

GPSMAP® 79

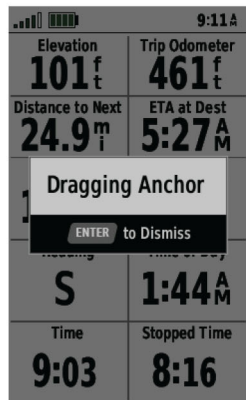
GPS Handheld

KEY FEATURES:

UPDATED	DISPLAY	New scratch-resistant, bonded display provides improved contrast and eliminates fogging; 26% larger screen with 2.5 times the resolution of the past generation in a sunlight-visible color display
NEW	GNSS	Reliable single-band GNSS supports multiple constellations (GPS, GLONASS, Beidou, Galileo, QZSS and SBAS) to allow for access to data around the world
NEW	CARTOGRAPHY	Built-in BlueChart® g3 charts (sc model only)
	WATER RATING	Improved water rating IPX7
UPDATED	MEMORY	Ability to track 10,000 waypoints (versus 2,000 in GPSMAP 78) and 250 routes (versus 200 in GPSMAP 78) and 300 saved fitness activities
	FLOATS	As with the previous model, GPSMAP 79 floats — in case of overboard mishaps
	BATTERY LIFE	In-use (GPS on) battery life of up to 19 hours
	SENSORS	Compass sensors enable the user to have access to basic navigation and orientation

SCREENS:

ANCHOR DRAG



COMPASS



WORLD WIDE BASEMAP



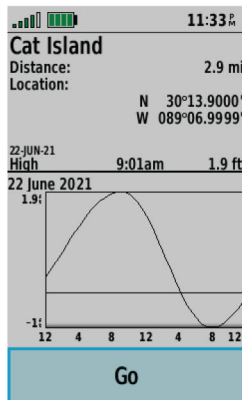
MOB



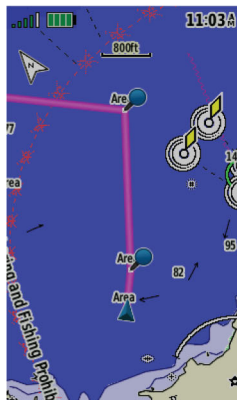
PROXIMITY ALARM



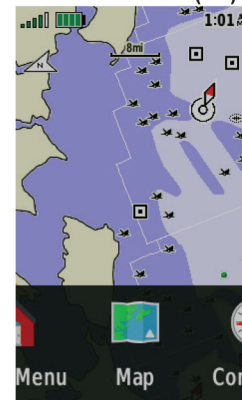
TIDE TABLES



ACTIVE ROUTE



BUILT-IN CARTOGRAPHY (SC)



GPSMAP® 79

GPS Handheld

PRODUCT COMPARISON:

GPSMAP 78 Series



GPSMAP 79 Series



Compass	78s/78sc	Tilt-compensated 3-axis
Barometric altimeter	•	
Interface	USB, NMEA 0183 network, MCX	USB, NMEA 0183 network
ANT+®/BLUETOOTH® technology	•	
Built-in maps	Basemap: 78, 78s Detailed map: 78sc	Basemap: 79s Detailed map: 79sc
Memory	1.7 GB	8 GB
Add maps	•	•
Waypoints	2,000	10,000
Routes	200	250
Track log	10,000 points; 200 tracks	20,000 points; 250 tracks; 300 fitness activities
Battery life	Up to 20 hours	Up to 19 hours (GPS on)
Water rating	IPX7	IPX7
Physical dimensions	2.6" x 6.0" x 1.2" (6.6 x 15.2 x 3.0 cm)	2.7" x 6.9" x 1.7" (6.8 x 17.4 x 4.2 cm)
Weight	8.1 oz (230 g) with batteries	9.6 oz (273 g) with batteries
Display size	2.6" diag (6.6 cm)	3" diag (7.6 cm)

PRODUCT CONFIGURATIONS:

SCHEDULE B: 8526910070
HTS: 8426.91.0040

GPSMAP 79s



DESCRIPTION	SKU	UPC
GPSMAP 79s	010-02635-00	753759284510

GPSMAP 79sc



DESCRIPTION	SKU	UPC
GPSMAP 79sc	010-02635-02	753759284534