

USER MANUAL QUICK INSTALLATION GUIDE

MRGB65 / MRGB65S

MARINE GRADE RGB 6.5" COAX SPEAKERS

BOSS[®]
AUDIO SYSTEMS

BOSS Audio Systems
3451 Lunar Court • Oxnard, CA 93030

www.bosssaudio.com | 800.999.1236
Tech Support: www.bosssaudio.com/support



0215

VER:1.0 EN



PRINTED IN CHINA

USER MANUAL

QUICK INSTALLATION GUIDE

MRGB65 / MRGB65S



FULLY
MARINIZED

MARINE GRADE 6.5" COAX SPEAKERS

BOSS[®]
AUDIO SYSTEMS

FEATURING 17 COLOR RGB LED's
and RF REMOTE CONTROLLER

TABLE OF CONTENTS

| | |
|---|----------|
| BEFORE YOU START ----- | 2 |
| <i>IMPORTANT SAFETY PRECAUTIONS</i> | |
| <i>INSTALLATION PRECAUTIONS</i> | |
| WIRE DIAGRAM ----- | 3 |
| BEFORE INSTALLING THIS PRODUCT ----- | 4 |
| <i>TECHNICAL SUPPORT</i> | |
| SUGGESTED MOUNTING LOCATIONS ----- | 5 |
| GETTING STARTED ----- | 6 |
| SPEAKER TEMPLATE ----- | 7 |
| TROUBLE SHOOTING GUIDE ----- | 8 |
| SPECIFICATIONS ----- | 8 |
| <i>TECHNICAL SUPPORT</i> | |

All rights reserved. No part of this publication may be reproduced, distributed, or transmitted in any form or by any means, including photocopying, recording, or other electronic or mechanical methods, without the prior written permission of AVA Enterprises Inc.

Copyright © 2015 AVA Enterprises Inc.

BOSS[®]
AUDIO SYSTEMS

Thank you for purchasing this



MRGB65 6.5" Coax Speakers w/ RGB LED RF Controller

Please read through these instructions carefully so you will know how to operate your model properly.

After you have finished reading these instructions, keep this document in a safe place for future reference.

THIS PACKAGE CONTAINS

2x- MRGB65 / MRGB65S Coax Speakers

(Depends on your model)

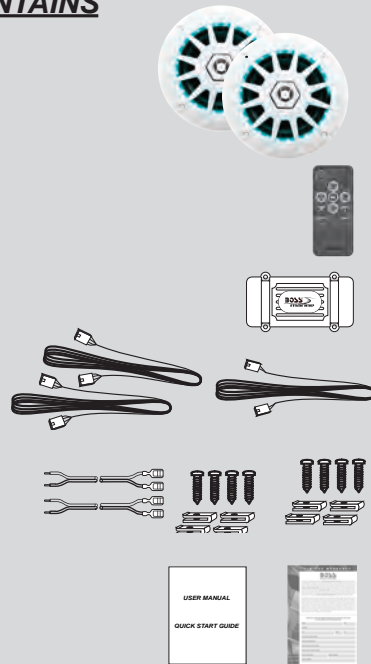
1x- RF Remote Controller

1x- RGB LED RF Sync Receiver HUB

2x- HUB Wire Extension Kit

2x- Speaker Wire & Mounting Hardware Kit

1x- User Manual / 1x- Warranty Card



FCC COMPLIANCE STATEMENT

This device complies with part 15 of the FCC Rules. Operation is subject to the following two conditions:

- (1) this device may not cause interference, and
- (2) this device must accept any interference, including interference that may cause undesired operation of this device.



BEFORE YOU START

IMPORTANT SAFETY PRECAUTIONS

BE SURE TO OBSERVE THE FOLLOWING GUIDELINES:

- Do not turn up the volume so high that you can't hear what's around you.
- Use caution or temporarily discontinue use in potentially hazardous situations.
- Do not operate mobile video equipment while driving a motorized vehicle
- Safe vehicle operation and safety consideration of others should always be your highest priority.
- Set your volume control at a low setting, then slowly increase the sound until you can hear it comfortably without distortion, or ear discomfort.
- In the event you should notice smoke, strange noises or odor from this product, or any other abnormal signs, immediately turn off the power and consult your dealer or the nearest authorized **BOSS AUDIO Service Center**. Using this product in this condition may result in permanent damage to the system.

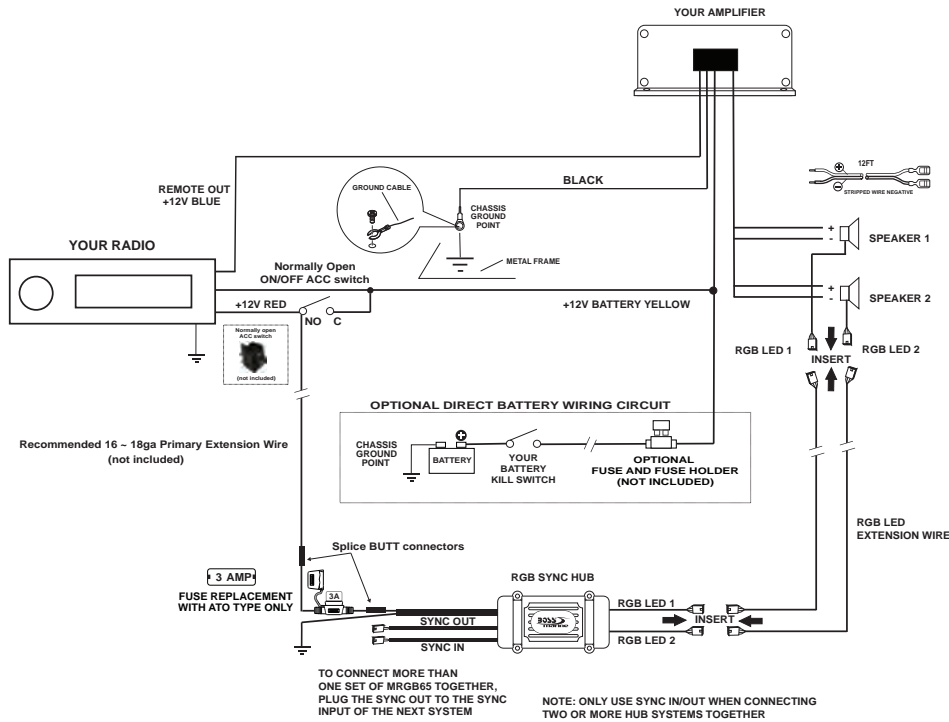
INSTALLATION PRECAUTIONS

WARNING - Always consult with a professional installer

- Do not attempt to install or service this product by yourself. Installation or servicing of this product by persons without professional training and experience in electronic equipment and motorized vehicle accessories may be dangerous and could expose you to the risk of electric shock, injury or other hazards
- Refer any repairs to a qualified **BOSS AUDIO SYSTEMS Service Center**
- The **MRGB65 LED RGB SYNC HUB** should be wired directly to a normally open switch or relay.
- When wiring directly to the vehicles battery, be sure to disconnect the batteries negative terminal wire before starting any wiring procedures, if extending the main power wire, it is suggested that an optional fuse and fuse holder (not included) with minimum rating of **10 Amperes** be in-line with the positive battery terminal
- The ground cable length should not exceed 18-inches (See wiring diagram pg 4)
- The **MRGB65** has a weather resistant design, it should not be submerged in or under water under any circumstances
- Use only the installation parts provided with the **MRGB65**



WIRE DIAGRAM



- Do not touch the speaker flex wire
- The RGB HUB controller should be installed in a non-metal and dry location
- Secure all wiring with wire ties
- Properly seal connections to ensure water tight connections

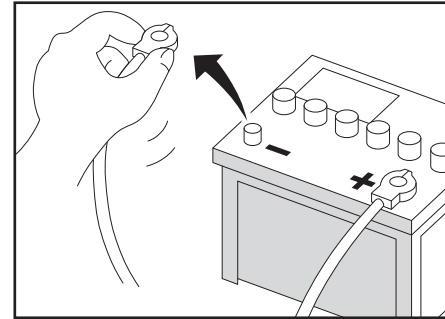


CAUTION!! Do not ground or short the RGB wires

3

BOSS
AUDIO SYSTEMS

BEFORE INSTALLING THIS PRODUCT



To avoid potential shorts in the electrical system, be sure to disconnect the (-) battery cable before installation. Use this unit with a 12-volt battery and negative grounding only.

Failure to do so may result in a fire or malfunction.



When replacing the fuse, be sure to only use a fuse of the rating specified on this product.

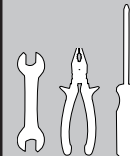
To avoid short-circuiting, cover any disconnected leads with insulating tape. It is especially important to insulate any unused wires, which if left uncovered may cause a short circuit. When connecting other devices to this product, refer to the manual for the product to be connected. The black cable is ground, make sure to connect the ground wire first.

Ensure that the ground cable is properly connected to metal parts of the vehicles body frame or direct to the battery if your vehicle does not have a grounded chassis frame. The ground cable of this units power amp and a second powered system must be connected to the frame separately with different screws. If the screw for the ground wire loosens or falls out, it could result in fire or malfunction.

TECHNICAL SUPPORT

1-800-999-1236

www.bossaudio.com/support



TOOLS NEEDED:

- Wrench and/or Pliers
- #2 Phillips screwdriver
- Crimp tool
- Handsaw / Jig Saw
- Electrical tape

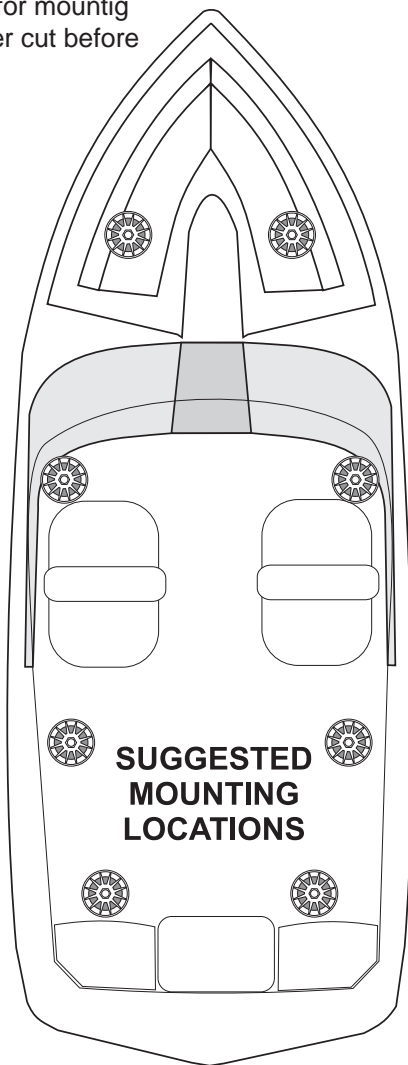
BOSS
AUDIO SYSTEMS

4

SUGGESTED MOUNTING LOCATIONS

The MRGB65 can be mounted in three different configurations:

Always double check for mounting depth limitations, never cut before you check



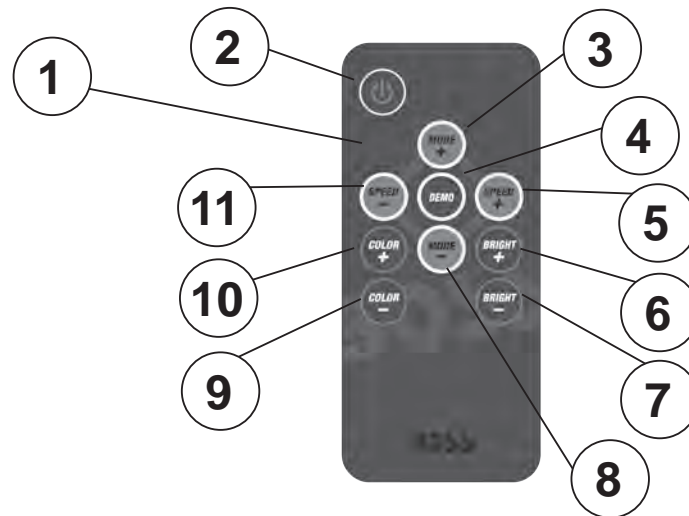
CAUTION!! Using other mounting methods may void this warranty

5

BOSS[®]
AUDIO SYSTEMS

GETTING STARTED

GETTING TO KNOW YOUR MRGB65 RF CONTROLLER



- 1 RF CONTROLLER
- 2 POWER ON / OFF
- 3 MODE UP
- 4 AUTO DEMO
- 5 SPEED UP
- 6 BRIGHTNESS UP
- 7 BRIGHTNESS DOWN
- 8 MODE DOWN
- 9 COLOR DOWN
- 10 COLOR UP
- 11 SPEED DOWN

- 1) RF controller range: Up to 25ft (LoS)
- 2) Do not obstruct the RF remote with metal
- 3) Always keep away from small children
- 4) Do not store in direct sunlight

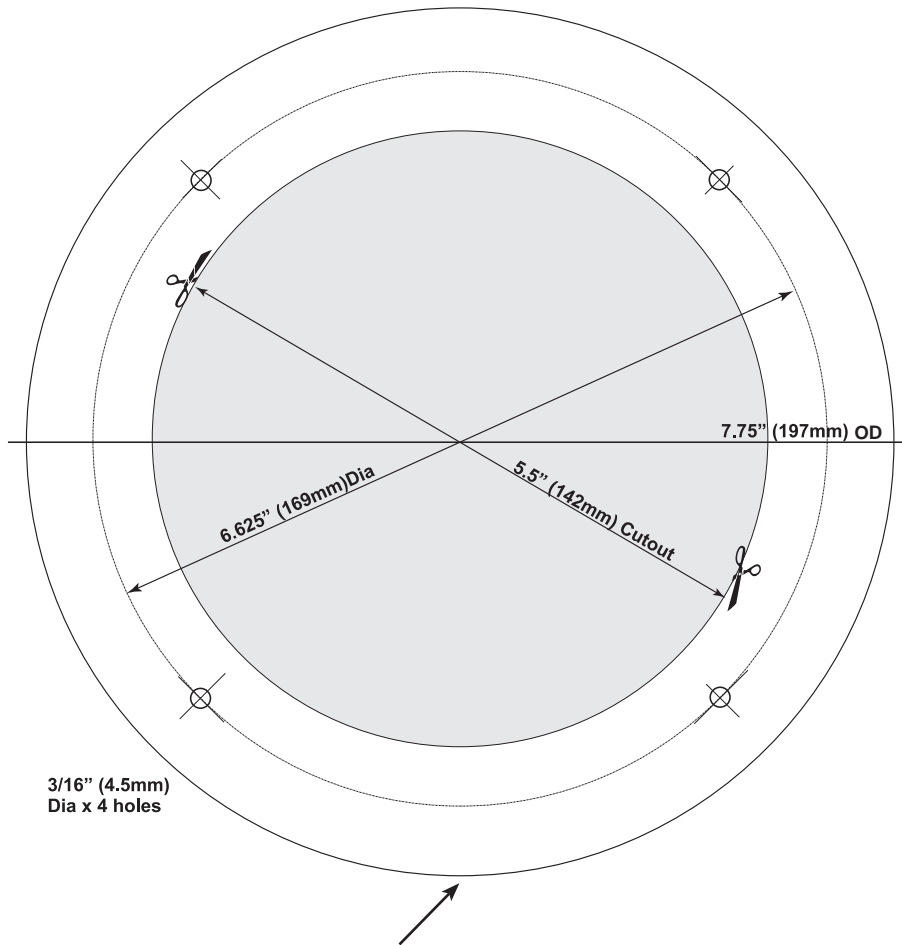
REPLACEMENT BATTERY - CR2032

6

BOSS[®]
AUDIO SYSTEMS

SPEAKER TEMPLATE

TEMPLATE FOR REFERENCE ONLY - NOT TO SCALE



3/16" (4.5mm)
Dia x 4 holes

WATER DRAINAGE HOLE - DO NOT BLOCK

**BE SURE TO MOUNT SPEAKER IN THE CORRECT ORIENTATION
TO ALLOW FOR WATER DRAINAGE**



Tips:

To avoid battery exhaustion be sure to run the vehicles engine while using this product. Using this product without running the engine can drain the battery.

7

BOSS[®]
AUDIO SYSTEMS

TROUBLE SHOOTING GUIDE

| TROUBLE | CAUSE | SOLUTION |
|------------------------------|------------------------------|--|
| RGB Unit will not turn on | The fuse is blown | Check / replace the fuse |
| | Switch not engaged | Turn to on position |
| No sound is heard | Blown speaker | Replace faulty speaker |
| | Volume is low / muted | Press the volume level up |
| Unit has become unresponsive | Device is paused or muted | Check your devices playing / volume status |
| | Power glitch or interference | Disconnect power for 10 seconds to reset |

TECHNICAL SUPPORT

1-800-999-1236
www.bossaudio.com/support

SPECIFICATIONS

SPEAKER GENERAL SPEC

- Speaker Type: Full Range
- Configuration: Coaxial
- Woofer Size: 6.5"
- Tweeter Size: 1"
- Mounting Depth: 2-5/8"
- Mounting Diameter: 5-3/4"
- Peak Power Handling: 200 Watts
- Impedance: 4Ω
- Sensitivity (1W/1M): 88dB
- Frequency Response: 70 Hz to 20 kHz, ±1 dB

RGB HUB GENERAL SPEC

- Power source: 14.4VDC (10.8V ~ 16V allowable)
- Grounding System: Negative type
- Maximum Current Consumption: 1.5A
- Unit Weight: 2.08lbs / 0.94kg
- Storage Temperature: 5°F to 113°F / -15°C to 45°C
- Operation Temperature: 14°F to 104°F / -10°C to 40°C



CAUTION!!
**ADJUSTMENT OR ALTERATIONS OF THIS DEVICE MAY RESULT
IN HAZARDOUS RADIATION EXPOSURE.**

8

BOSS[®]
AUDIO SYSTEMS