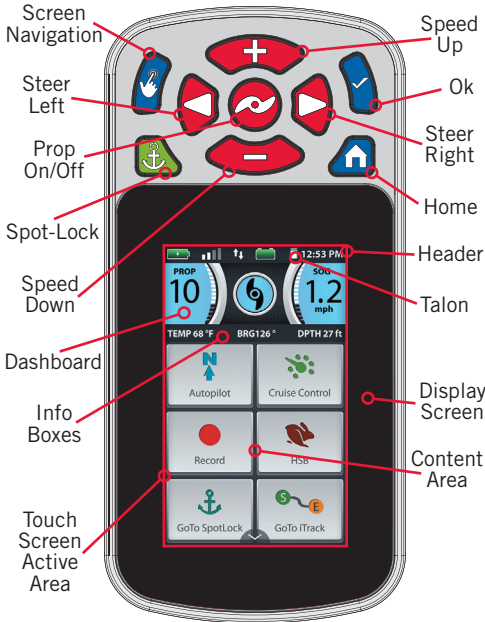


Compatible with all Bluetooth® enabled i-Pilot® Link™ Systems

i-PILOT® LINK™ REMOTE



GPS Signal Strength

Displays the level of GPS signal strength. If no bars appear, or if the bars are flashing, the system has not yet acquired a GPS fix.



Humminbird Connection

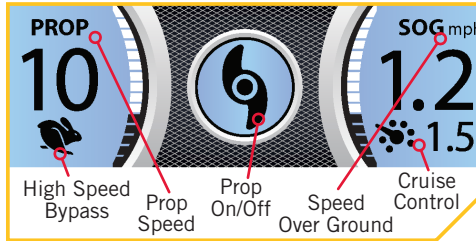
Displays white arrows to show when the i-Pilot Link controller is communicating with the Humminbird. Grey arrows indicate that there is no communication.



Talon

Displays the connection with one or two Talons and indicates if the Talon(s) are deployed. One icon will display in the event that one Talon is paired, and two will display if two Talons are paired. The icons will turn grey to indicate that the Talon(s) is not connected.

i-PILOT LINK DASHBOARD



SOG Speed Over Ground

Displays the current speed over ground.



High Speed Bypass

Displays when High Speed Bypass is engaged.



Prop On/Off

Displays when the Prop is enabled. Rotates when the Prop is on and the Prop Speed is greater than zero. Blinks when a mode of navigation is used that requires the prop to be enabled.



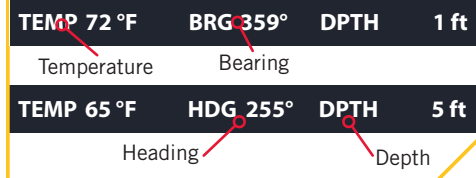
Cruise Control

Displays when Cruise Control is engaged along with the Target Speed.

PROP Prop Speed

Displays the current Prop Speed. Can be adjusted in 1/2 speed increments between 0 and 10.

INFO BOXES



BRG Bearing

Bearing is the direction from the boat's current location to the target destination during navigation.

HDG Heading

Heading is the direction that the motor is pointing.

TEMP Temperature

The current water temperature based on communication with the Humminbird.

DPTH Depth

The current water depth based on communication with the Humminbird.

i-PILOT LINK HOME SCREEN BUTTONS



Legacy AutoPilot

The AutoPilot button is used to engage and disengage Legacy AutoPilot.



Advanced AutoPilot

The AutoPilot button is used to engage and disengage Advanced AutoPilot.



Record

The Record button is used to start and stop recording an iTrack.



HSB

Select the HSB (High Speed Bypass) button to engage High Speed Bypass. High Speed Bypass automatically sets the Prop speed to 10. Double press to engage. Single press to disengage.



Lock Keys

Select the Lock button to lock the buttons and touch screen. Pressing and holding the Screen Navigation button also locks and unlocks the remote.



Cruise Control

Press the Cruise Control button to enable or disable Cruise Control. Once Cruise Control is enabled, pressing the Speed Up or Speed Down buttons will change the Target Speed rather than the Prop Speed.



Mark Waypoint

Press to mark a Waypoint.



Settings

Press the Settings button to open the Settings menu and adjust settings within the i-Pilot Link system.



Options

Press the Options button to open the Options menu and adjust options within the i-Pilot Link system.



Go To Spot-Lock

The Go To Spot-Lock button is used to open a menu used to navigate to a Spot-Lock location. The i-Pilot Link system will only bring up Spot-Locks within a quarter mile range.



Go To iTrack

The Go To iTrack button is used to open a menu used to navigate to an iTrack. The i-Pilot Link system will only bring up iTracks within a quarter mile range.



Go To Waypoint

The Go To Waypoint button is used to open a menu used to navigate to a Waypoint location. The i-Pilot Link system will only bring up Waypoints within a quarter mile range.



Ulterra

The Ulterra button is used to access functions specific to controlling the Ulterra.

CONTROL BUTTONS



Home

Press to bring up the Home Screen Buttons.



Screen Navigation

Press to navigate the menu without touching the screen. Press and hold to lock and unlock the remote.



Ok

Press to accept menu selections. Press to power remote on. Press and hold for 3 seconds to power remote off.



Speed Up & Speed Down

Press to increase or decrease motor speed.



Steer Left & Steer Right

Press to steer the motor to the left or to the right.



Prop On/Off

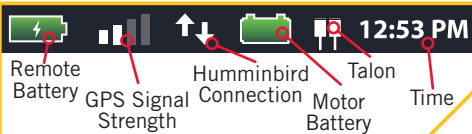
Press to turn the Prop on and off.



Spot-Lock

Press to enable and disable Spot-Lock.

HEADER



Motor Battery

Displays motor battery level when prop is disengaged.

12:53 PM Time

Displays the current time.



Remote Battery

Displays the battery level of the remote.

CRUISE CONTROL

Engaging Cruise Control

1. Scroll through the Content Area using your finger or the Screen Navigation button to find the Cruise Control button.
2. Select the Cruise Control button using your finger or by pressing the Ok button.
3. The Cruise Control target speed will appear in the Dashboard. The Target Speed can be increased and decreased using the Speed Up and Speed Down buttons.

Disengaging Cruise Control

1. When Cruise Control is engaged, scroll through the Content Area using your finger or the Screen Navigation button to find the Cruise Control button.
2. Select the Cruise Control button using your finger or by pressing the Ok button.
3. The Cruise Control Target Speed will disappear from the Dashboard.

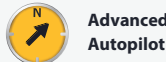
AUTOPILOT

Engaging AutoPilot

1. Scroll through the Content Area using your finger or the Screen Navigation button to find the AutoPilot button.
2. Select the AutoPilot button using your finger or by pressing the Ok button.
3. The AutoPilot Active Band will appear in the Content Area. Either Legacy AutoPilot or Advanced AutoPilot will be engaged depending on the AutoPilot Mode selected.



Legacy AutoPilot



Advanced AutoPilot

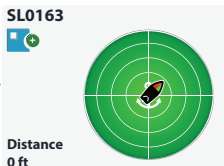
Disengaging AutoPilot

1. When AutoPilot is engaged, scroll through the Content Area using your finger or the Screen Navigation button to find the AutoPilot button.
2. Select the AutoPilot button using your finger or by pressing the Ok button.
3. The AutoPilot Active Band will disappear from the Content Area.

SPOT-LOCK

Engaging Spot-Lock

1. Press the Spot-Lock button.
2. The Spot-Lock Active Band will appear in the Content Area.
3. To save the Spot-Lock, select the Spot-Lock Active Band using your finger or by pressing the Ok button.
4. Scroll through the Spot-Lock Control Screen using your finger or by pressing the Screen Navigation button to find the Save button.
5. Select the Save button using your finger or by pressing the Ok button to save the Spot-Lock. The Save icon will disappear from the Active Band.



Spot-Lock Jog

(Heading Sensor required.)

1. To engage Spot-Lock Jog, first engage Spot-Lock. Use the Speed Down (jog

backward), Speed Up (jog forward), Steer Left (jog left), and Steer Right (jog right) buttons to jog the Spot-Lock location 5 feet in the selected direction from the current Spot-Lock location.

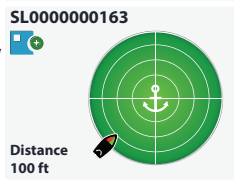
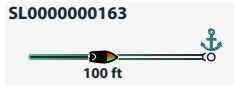
2. To Jog the Spot-Lock location with the Screen Navigation button, select the Spot-Lock Active Band to open the Spot-Lock Control Screen. Select the Back, Forward, Left, or Right buttons using your finger or by scrolling to one with the Screen Navigation button and pressing the Ok button.

Disengaging Spot-Lock

1. With Spot-Lock engaged, press the Spot-Lock button on the remote to disengage Spot-Lock.
2. The Spot-Lock Active Band will disappear from the Content Area.

Go To a Saved Spot-Lock

1. Scroll through the Content Area using your finger or the Screen Navigation button to find the Go To Spot-Lock button.
2. Select the Go To Spot-Lock button using your finger or by pressing the Ok button. A list of Spot-Locks that are within a quarter mile will appear.
3. Scroll through the list of Spot-Locks using your finger or the Screen Navigation button to find a Spot-Lock.
4. Select the Spot-Lock using your finger or pressing the Ok button.



WAYPOINTS

Mark a Waypoint

1. Scroll through the Content Area using your finger or the Screen Navigation button to find the Mark Waypoint button.
2. Select the Mark Waypoint button using your finger or by pressing the Ok button.

Go To a Saved Waypoint

1. Scroll through the Content Area using your finger or the Screen Navigation button to find the Go To Waypoint button.
2. Select the Go To Waypoint button using your finger or by pressing the Ok button. A list of Waypoints that are within a quarter mile will appear.
3. Scroll through the list of Waypoints using your finger or the Screen Navigation button to find a Waypoint to navigate to.
4. Select the Waypoint using your finger or by pressing the Ok button.
5. The Waypoint Active Band will appear in the Content Area.



Disengage Go To Waypoint

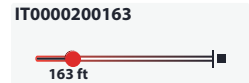
1. When Go To Waypoint is engaged, scroll through the Content Area using either your finger or the Screen Navigation button to find the Waypoint Active Band.

2. Select the Waypoint Active Band using your finger or by pressing the Ok button.
3. Select the Cancel button from the Waypoint Control Screen using your finger or by scrolling to it with the Screen Navigation button and pressing the Ok button to select it.

iTRACK

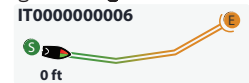
Recording an iTrack

1. Scroll through the Content Area using your finger or the Screen Navigation button to find the Record button.
2. Select the Record button using your finger or by pressing the Ok button. The iTrack Active Band will appear in the Content Area.
3. Engage the Prop and manually navigate the desired course.
4. To Save the recording, select the iTrack Active Band using your finger or by scrolling to it with the Screen Navigation button and pressing the Ok button.
5. Select the Stop and Save button from the iTrack Control Screen using your finger or by scrolling to it with the Screen Navigation button and pressing the Ok button.



Go To a Saved iTrack

1. Scroll through the Content Area using your finger or the Screen Navigation button to find the Go To iTrack button.
2. Select the Go To iTrack button using your finger or by pressing the Ok button. A list of iTracks that are within a quarter mile will appear.
3. Scroll through the list of iTracks using your finger or the Screen Navigation button to find an iTrack.
4. Select the iTrack using your finger or by pressing the Ok button.
5. Decide to navigate To Start or To End and select the appropriate button using your finger or by scrolling to it with the Screen Navigation button and pressing the Ok button.
6. The iTrack Active Band will appear in the Content Area.



Disengage Go To iTrack

1. When Go To iTrack is engaged, scroll through the Content Area using your finger or the Screen Navigation button to find the iTrack Active Band.
2. Select the iTrack Active Band using your finger or by pressing the Ok button.
3. Select the Cancel button from the iTrack Control Screen using your finger or by scrolling to it with the Screen Navigation button and pressing the Ok button to select it.

NOTICE: For i-Pilot Link features that can be activated from the Humminbird, please refer to your Humminbird manual.



Scan to view the complete i-Pilot Link Owner's Manual online.