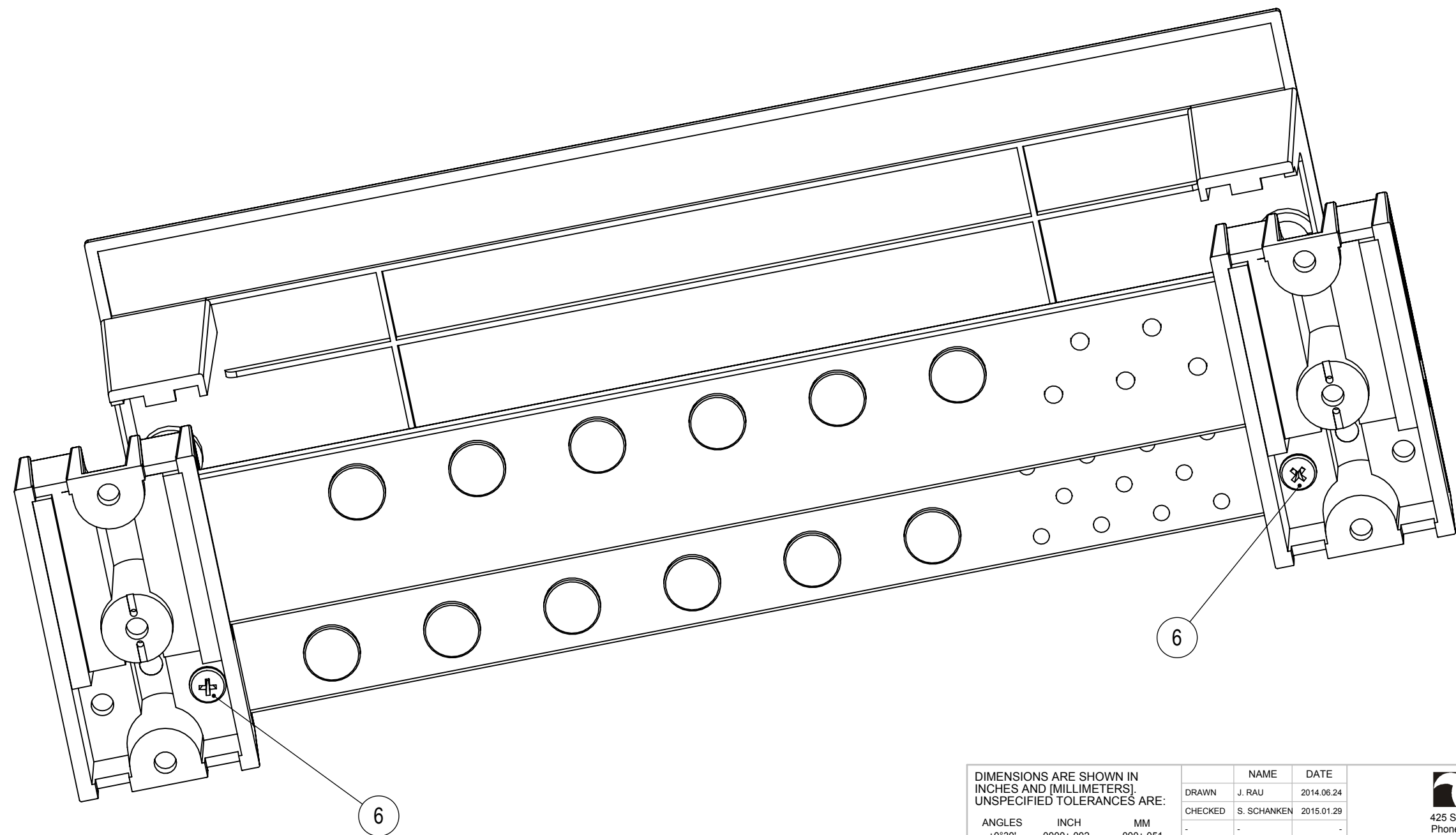
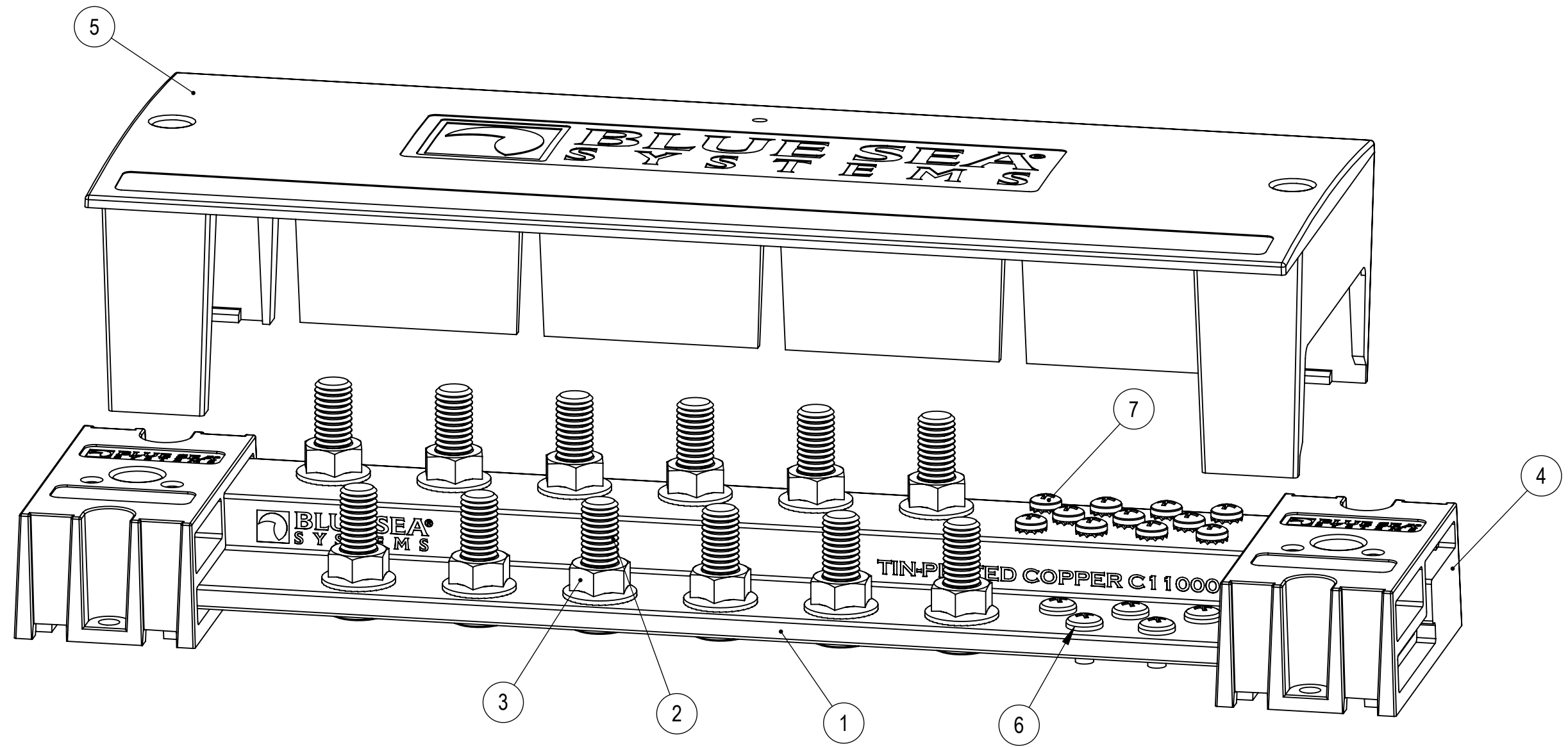


THIS DRAWING AND THE INFORMATION CONTAINED WITHIN IT ARE CONFIDENTIAL AND MAY NOT BE COPIED OR DISCLOSED WITHOUT THE WRITTEN PERMISSION OF BLUE SEA SYSTEMS.

| REVISIONS | | | |
|-----------|--|------------|----------|
| ZONE REV. | DESCRIPTION | DATE | APPROVED |
| 0 | PART NUMBER AND DRAWING CREATION | 2014.06.24 | J. RAU |
| 1 | PRODUCTION RELEASE. REFERENCE ECO E-001638 | 2015.01.28 | J. RAU |

| ITEM NO. | PART NUMBER | DESCRIPTION | QTY. |
|----------|-------------|--|------|
| 1 | 980017510 | 12 Position 3/8" PowerBar 1000 Busbar | 1 |
| 2 | 6735 | 3/8"-16 x 1.25" Self-Clinching SS Stud | 12 |
| 3 | 980015170 | 3/8" Serrated Flanged Nut | 12 |
| 4 | 980017870 | PowerBar 1000 Support | 2 |
| 5 | 980017850 | 12 Position PowerBar 1000 Cover | 1 |
| 6 | 9325 | 10-24 x 3/8 Screw | 7 |
| 7 | 9950 | 8-32 x 5/16 Screw ETLW | 11 |



THIRD ANGLE PROJECTION



DIMENSIONS ARE SHOWN IN INCHES AND (MILLIMETERS). UNSPECIFIED TOLERANCES ARE:

| ANGLES | INCH | MM |
|--------|---------|---------|
| ±0°30' | ±0.0002 | ±0.0051 |
| | ±0.0005 | ±0.0127 |
| | ±0.010 | ±0.254 |

MATERIAL ASSEMBLY
FINISH N/A
DO NOT SCALE DRAWING

| NAME | DATE |
|---------------------|------------|
| DRAWN J. RAU | 2014.06.24 |
| CHECKED S. SCHANKEN | 2015.01.29 |

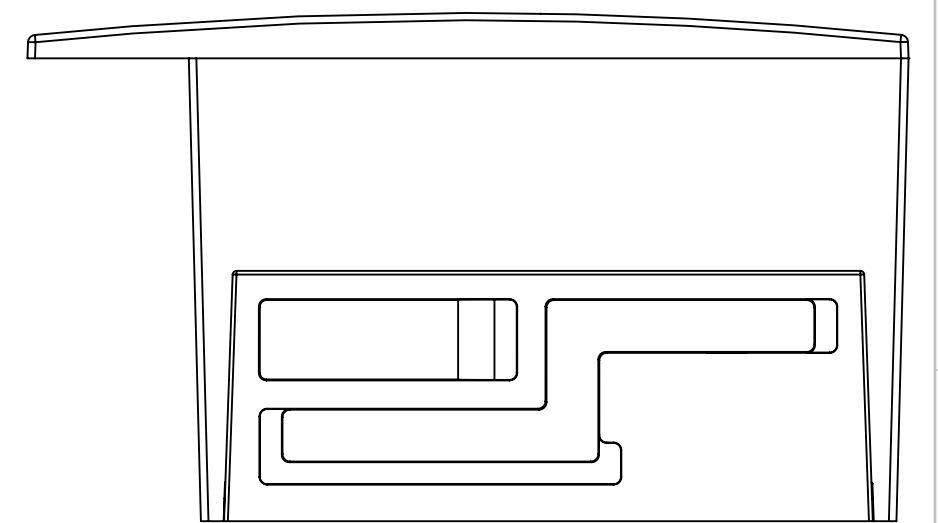
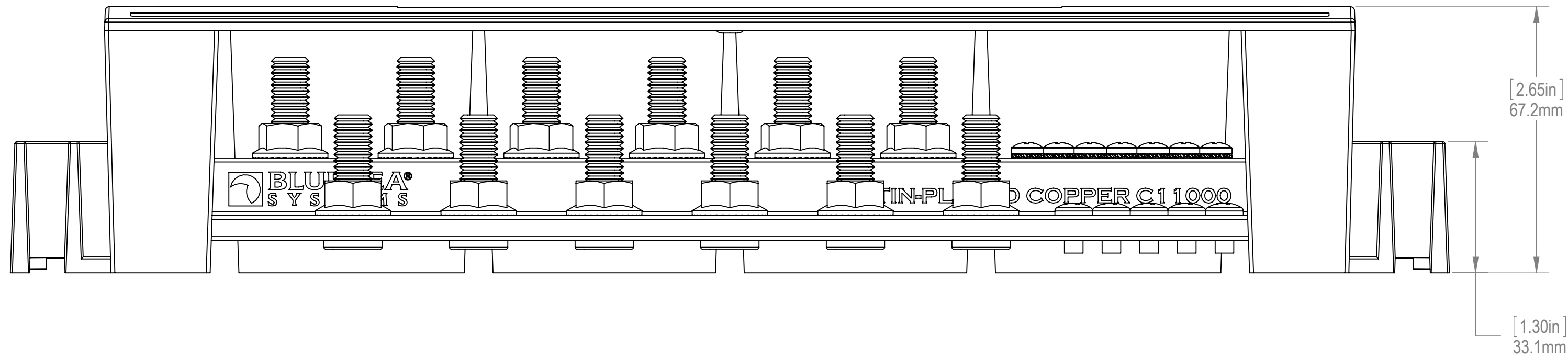
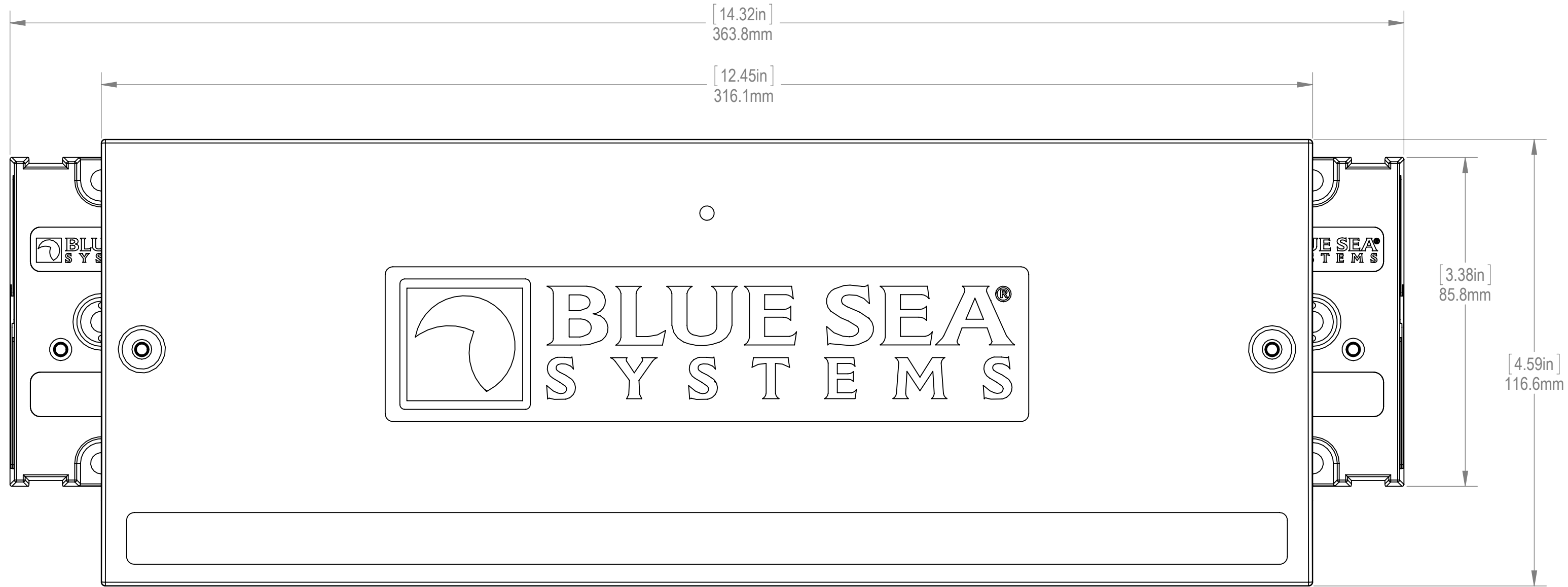
COMMENTS:



TWELVE POSITION 3/8-16 STUD POWERBAR 1000
Part Number 1991

| | | |
|-----------|-----------------|--------|
| SIZE C | DWG. NO. 1991-1 | REV. 1 |
| SCALE 1:2 | SHEET 1 OF 3 | |

THIS DRAWING AND THE INFORMATION CONTAINED WITHIN IT ARE CONFIDENTIAL AND MAY NOT BE COPIED OR DISCLOSED WITHOUT THE WRITTEN PERMISSION OF BLUE SEA SYSTEMS.



THIRD ANGLE PROJECTION



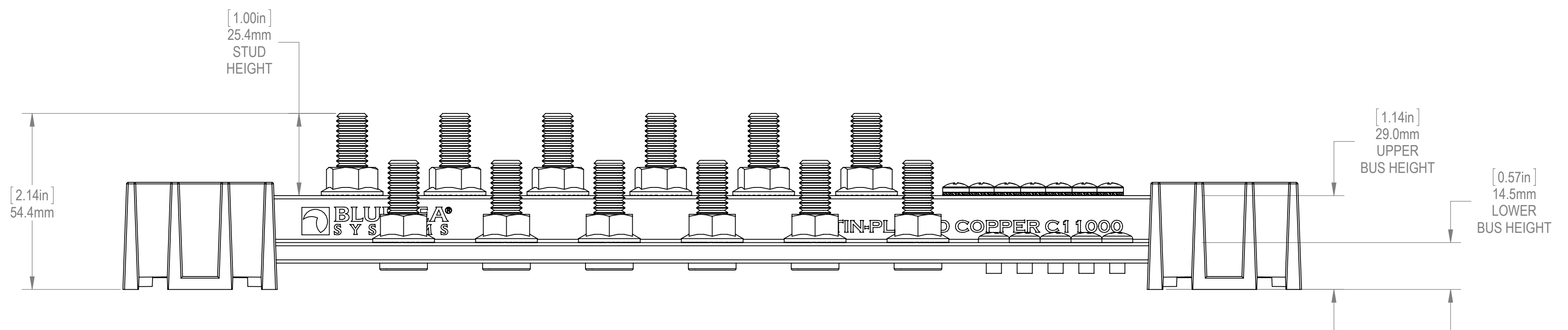
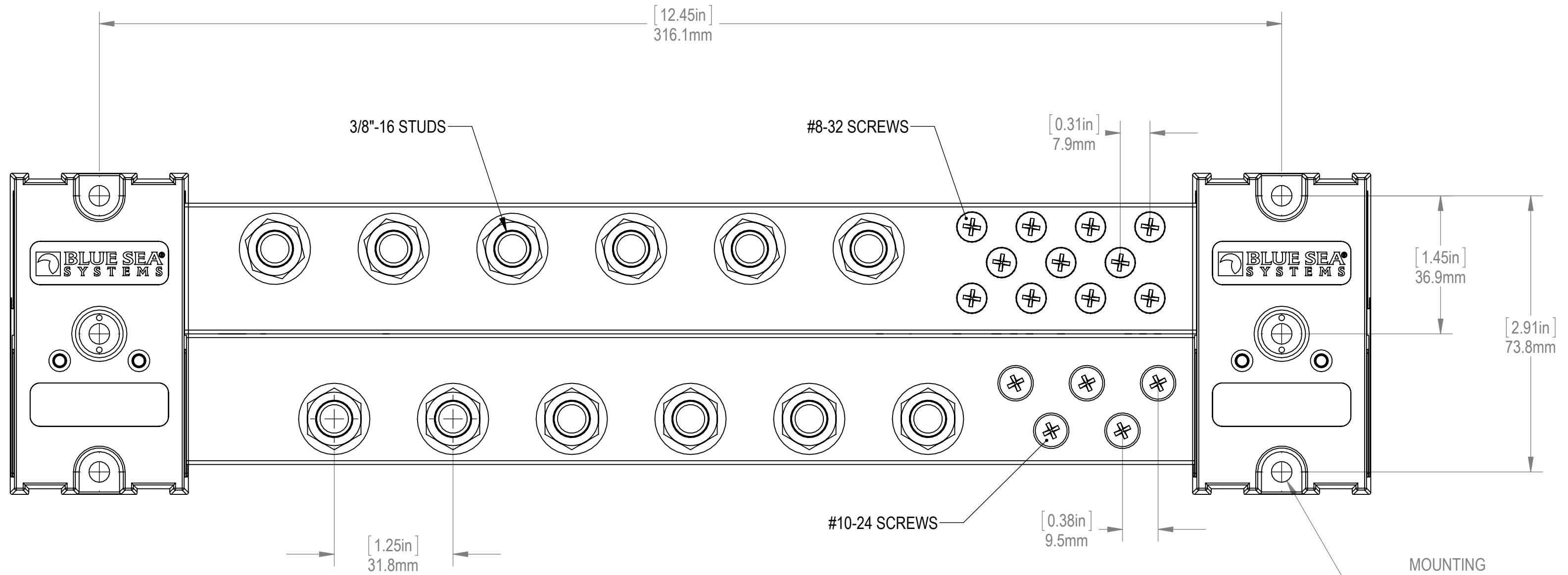
BLUE SEA SYSTEMS

425 Sequoia Drive Bellingham, WA 98226
Phone (360)738-8230 Fax (360)734-4195

TWELVE POSITION 3/8-16 STUD POWERBAR 1000
Part Number 1991

| | | |
|-----------|--------------------|--------------|
| SIZE C | DWG. NO. 1991-1 | REV. 1 |
| SCALE 1:1 | | SHEET 2 OF 3 |

THIS DRAWING AND THE INFORMATION CONTAINED WITHIN IT ARE CONFIDENTIAL AND MAY NOT BE COPIED OR DISCLOSED WITHOUT THE WRITTEN PERMISSION OF BLUE SEA SYSTEMS.



THIRD ANGLE PROJECTION



BLUE SEA SYSTEMS

425 Sequoia Drive Bellingham, WA 98226
Phone (360)738-8230 Fax (360)734-4195

TWELVE POSITION 3/8-16 STUD POWERBAR 1000
Part Number 1991-1

| | | |
|-----------|----------|--------------|
| SIZE | DWG. NO. | REV. |
| C | 1991-1 | 1 |
| SCALE 1:1 | | SHEET 3 OF 3 |