

**LIGHTARMOR**  
UNDERWATER Lights

The new leader  
in brightness and durability.

 attwood®

**INTRODUCING LIGHT ARMOR UNDERWATER LIGHTS** from Attwood, a new line of premium surface mount LED lights that are engineered to be the brightest and most durable lights in the industry. Like all Light Armor products, they're technically advanced, built to perform in the harshest marine environments, and backed by an industry-leading 10-year warranty.

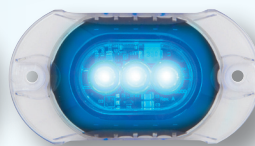


## Light Armor Underwater Lights

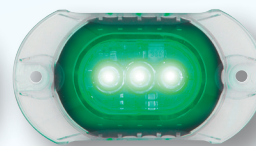
- Three popular sizes: 4" / 5" / 6"
- Three vibrant colors
- Two performance levels:  
*High Performance (HP)*  
*Extreme High Performance (HPX)*



Intense White



Sapphire Blue

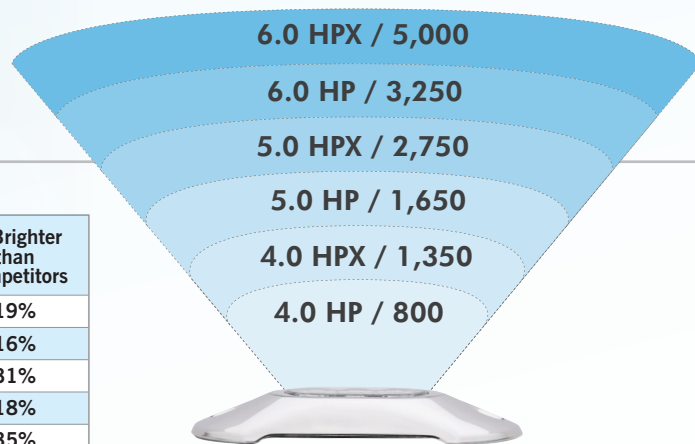


Tactical Green

## Outshining the Competition

Light Armor Underwater Lights are the brightest on the market.

Model	% Brighter than Competitors
6.0 HPX	19%
6.0 HP	16%
5.0 HPX	31%
5.0 HP	18%
4.0 HPX	35%
4.0 HP	14%

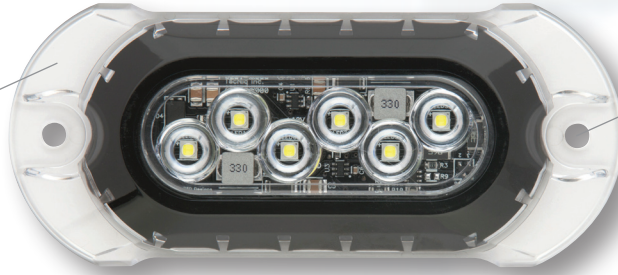


Model / Fixture Lumens

Intelligently Engineered  
for Strength and Durability

# LIGHTARMOR

Resistant  
to corrosion,  
chemicals, and  
UV damage



Simple installation  
with minimal  
mounting hardware

Extreme  
impact-resistant  
lens



Low-profile design

3' sheathed wire



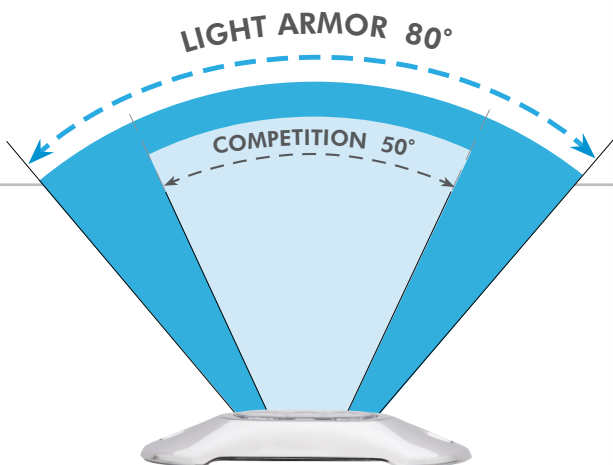
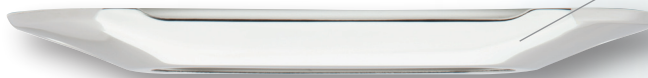
Heat sink cooling  
system with  
active overheat  
protection

Reverse polarity  
protection



Fully-sealed  
waterproof  
electronics

Electro-polished  
316 stainless steel  
cover (optional)



Light Armor Underwater Lights  
project a powerful beam that  
maintains intensity over a 62%  
wider area than the competition.

Projection Intensity vs. Competitor

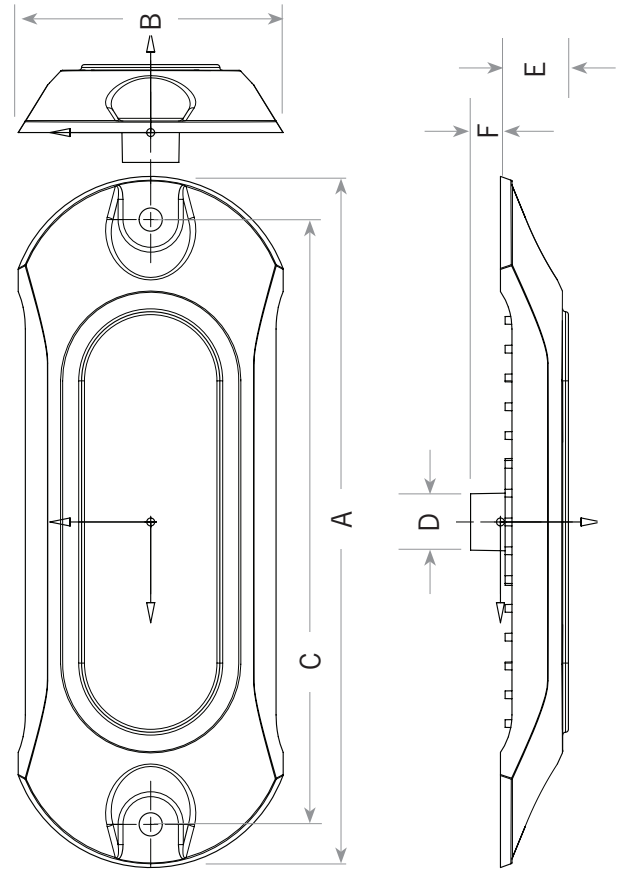
**Technical Specifications**

Model	Part Number	Color	Fixture Lumens*	Voltage	Application	Maximum Amp Draw at 13.6VDC	Length (A)	Width (B)	Distance Between Mounting Holes (C)	Diameter of Wiring Hole (D)	Installed Product Height (E)	Wire Collar Depth (F)	Heat Management	Intense Light Beam Angle	Maximum Operating Depth	Scratch, Impact, and Chemical Resistance	Reverse Polarity Protection	3' Sheathed Wire
4.0 HP	65UW03B-1	Sapphire Blue	800	12 VDC	Below water	0.43	4.00"	2.15"	3.25"	.56"	.56" (Use 9/16" drill bit)	.30"	Exclusive heat sink cooling system with active overheat protection	80°	98.4'	Yes	Yes	Yes
	65UW03G-1	Tactical Green				0.80												
	65UW03W-1	Intense White				0.85												
4.0 HPX	66UW03B-1	Sapphire Blue	1,350	12 VDC	Below water	1.60	5.00"	2.15"	4.25"	.56"	.56" (Use 9/16" drill bit)	.30"	Exclusive heat sink cooling system with active overheat protection	80°	98.4'	Yes	Yes	Yes
	66UW03G-1	Tactical Green				1.61												
	66UW03W-1	Intense White				3.00												
5.0 HP	65UW06B-1	Sapphire Blue	1,650	12 VDC	Below water	0.81	5.00"	2.15"	4.25"	.56"	.56" (Use 9/16" drill bit)	.30"	Exclusive heat sink cooling system with active overheat protection	80°	98.4'	Yes	Yes	Yes
	65UW06G-1	Tactical Green				1.50												
	65UW06W-1	Intense White				1.61												
5.0 HPX	66UW06B-1	Sapphire Blue	2,750	12 VDC	Below water	1.61	6.00"	2.35"	5.25"	.56"	.56" (Use 9/16" drill bit)	.30"	Exclusive heat sink cooling system with active overheat protection	80°	98.4'	Yes	Yes	Yes
	66UW06G-1	Tactical Green				1.61												
	66UW06W-1	Intense White				3.00												
6.0 HP	65UW12B-1	Sapphire Blue	3,250	12 VDC	Below water	1.61	6.00"	2.35"	5.25"	.56"	.56" (Use 9/16" drill bit)	.30"	Exclusive heat sink cooling system with active overheat protection	80°	98.4'	Yes	Yes	Yes
	65UW12G-1	Tactical Green				2.80												
	65UW12W-1	Intense White				3.22												
6.0 HPX	66UW12B-1	Sapphire Blue	5,000	12 VDC	Below water	3.22	6.00"	2.35"	5.25"	.56"	.56" (Use 9/16" drill bit)	.30"	Exclusive heat sink cooling system with active overheat protection	80°	98.4'	Yes	Yes	Yes
	66UW12G-1	Tactical Green				5.30												
	66UW12W-1	Intense White																

\*Fixture Lumens based on Intense White. LED life expectancy is 50,000 hours.

**Stainless Steel Covers**

Model	Part Number
4.0	65UW03CVSS-1
5.0	65UW06CVSS-1
6.0	65UW12CVSS-1



Attwood Corporation  
Lowell, MI 49331  
attwoodmarine.com

Call 616-897-9241 or visit  
attwoodmarine.com to learn more.

