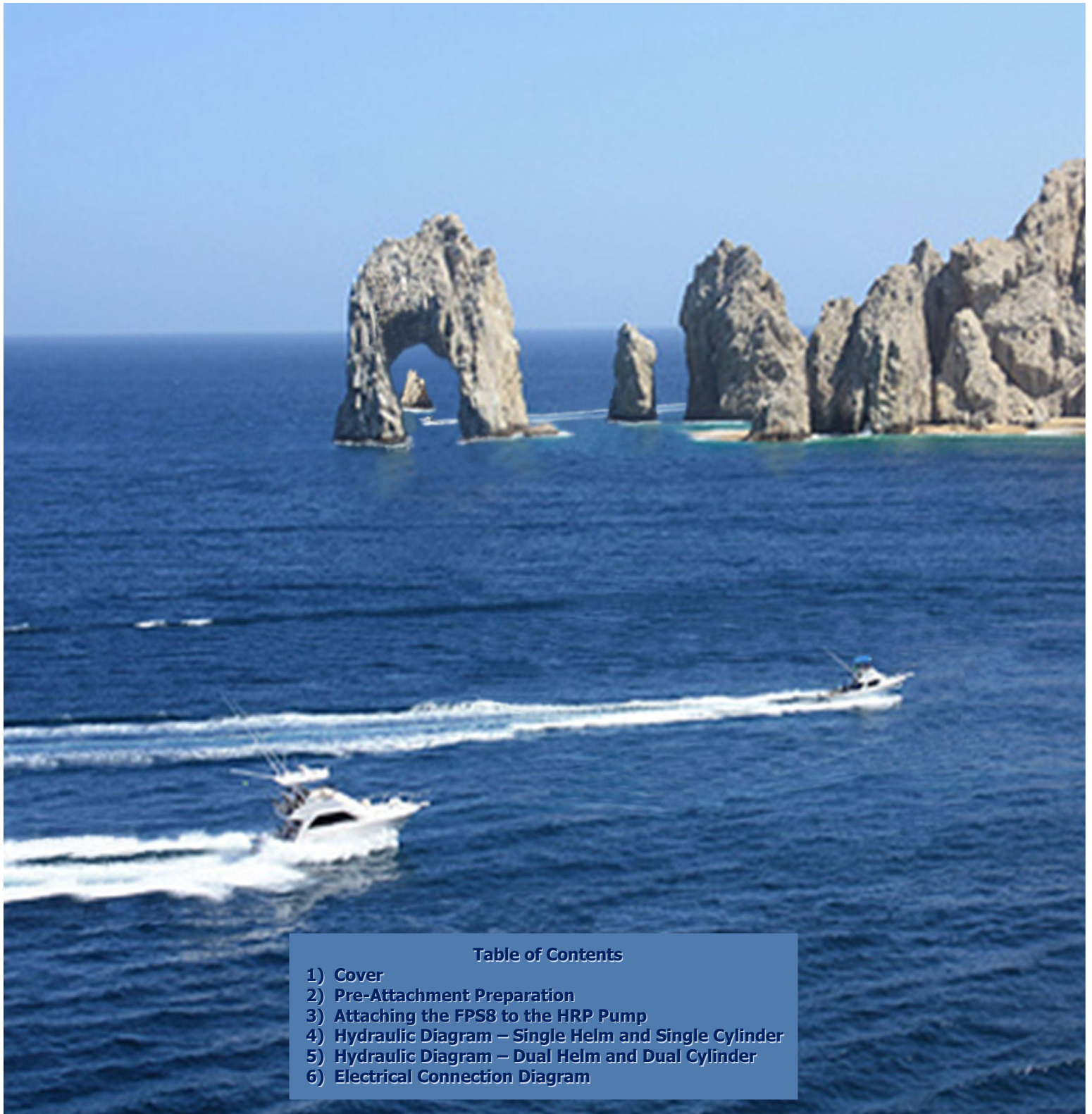


## FPS8 Power Steering Module for the NavPilot 700 711 720 Autopilot Installation Information

Compatible with the following pump models: PUMPHRP05-12, PUMPHRP05-24,  
PUMPHRP11-12, PUMPHRP11-24, PUMPHRP17-12, PUMPHRP17-24



### Table of Contents

- 1) Cover
- 2) Pre-Attachment Preparation
- 3) Attaching the FPS8 to the HRP Pump
- 4) Hydraulic Diagram – Single Helm and Single Cylinder
- 5) Hydraulic Diagram – Dual Helm and Dual Cylinder
- 6) Electrical Connection Diagram

## Pre-Attachment Preparation

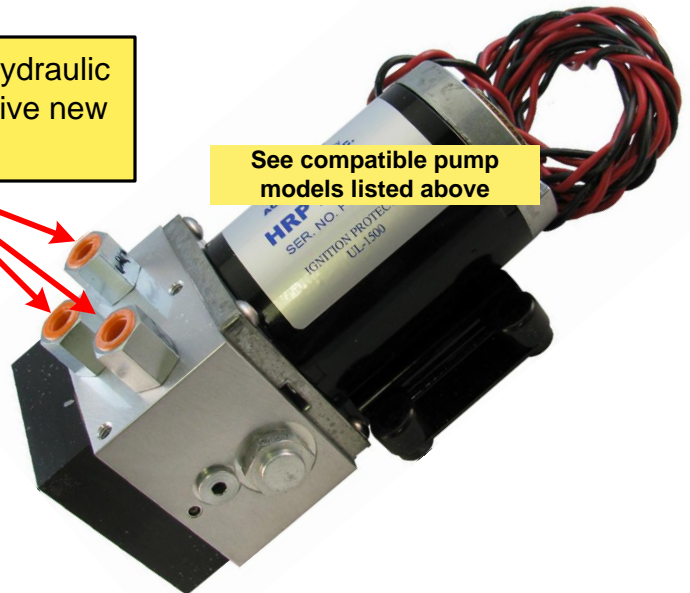
### WARNING!!!

It is critical that this conversion only be performed on a **VERY CLEAN** work surface! **DIRT, DUST AND/OR OTHER CONTAMINANTS WILL DAMAGE THE PUMP AND CAUSE IT TO FAIL!!!**

#### STEP 1

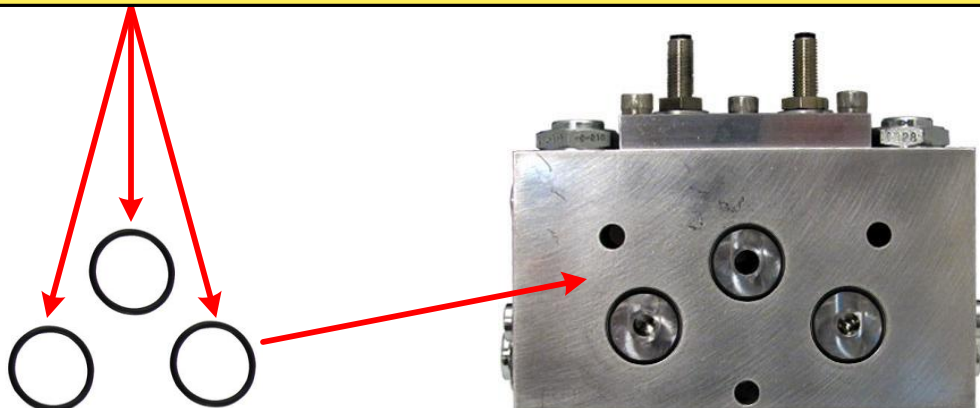
Use either a 19mm or 3/4" wrench to remove the 3 hydraulic fittings from the top of the HRP Pump and discard. Five new fittings are provided with the hardware kit.

See compatible pump models listed above



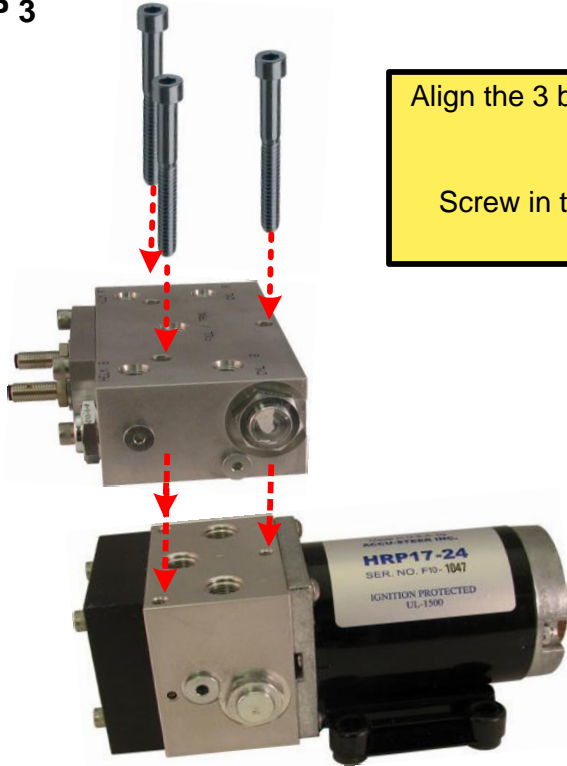
#### STEP 2

Insert the 3 "O" rings from the hardware kit into the round recesses in the bottom of the FPS-8 Power Steering Module. Apply a small amount of hydraulic fluid to the "O" rings to hold them in place. Carefully assemble and tighten allen screws evenly, ensuring that the o-rings are not pinched!!



## Attaching the FPS8 to the HRP Pump

### STEP 3



Align the 3 bolt holes in FPS-8 Power Steering Module with the 3 threaded holes in the HRP Pump housing.

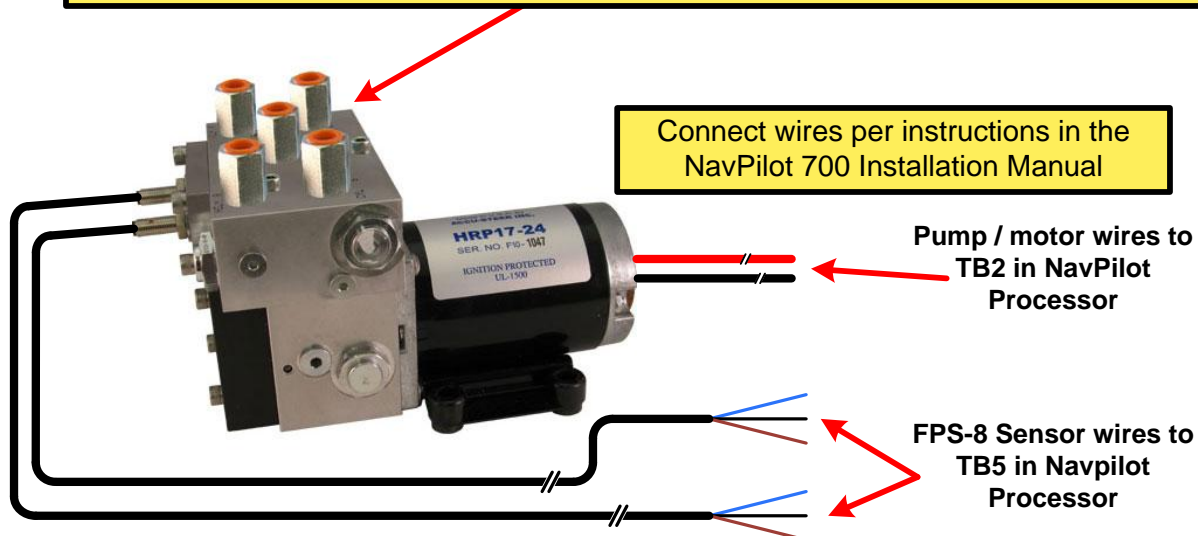
Screw in the 3 Allen-head bolts from the hardware pack. Tighten them evenly with a 3/16" Allen wrench.

**Make sure the "O" rings remain in place and do not fall out or get pinched during assembly.**

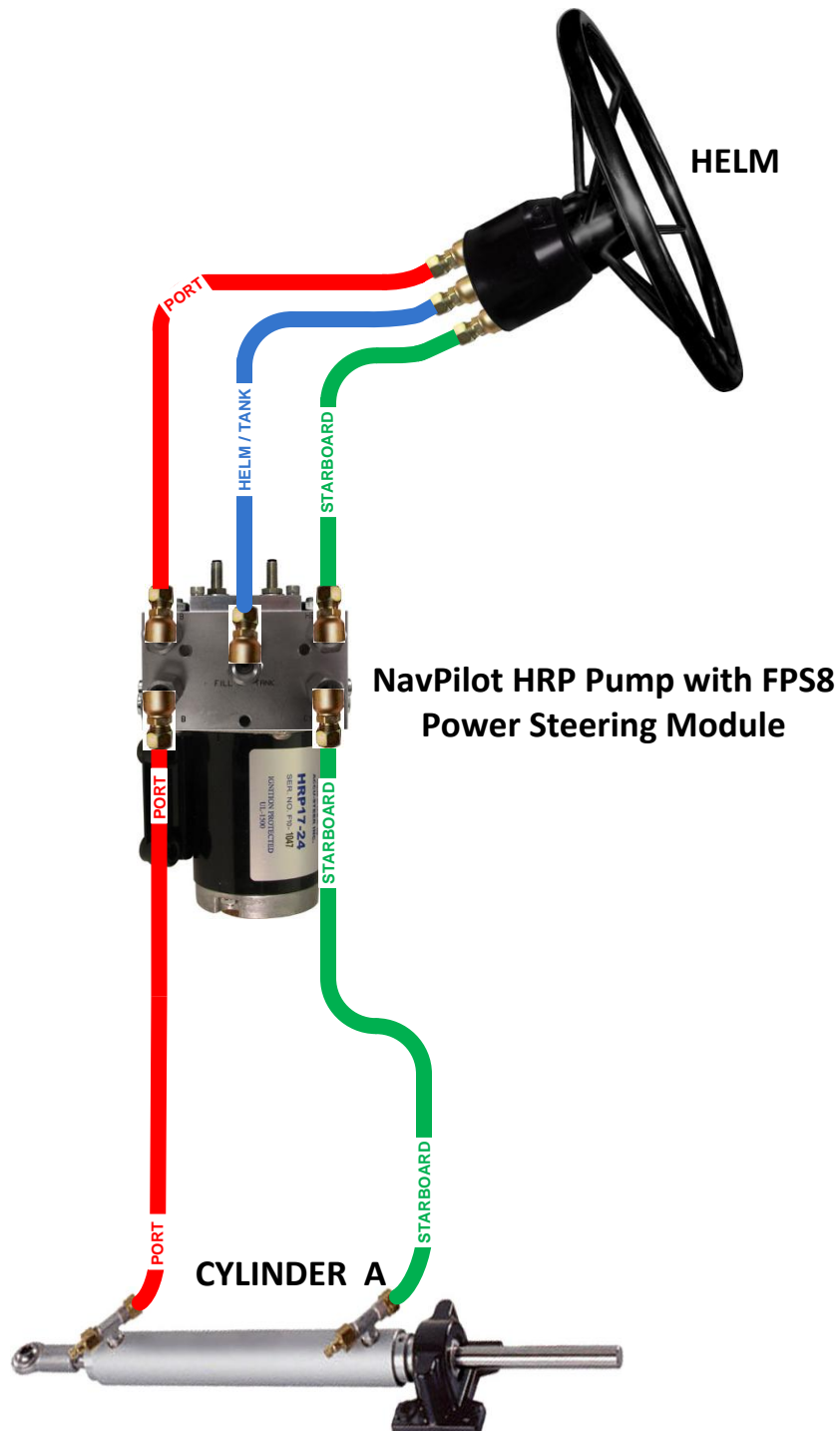
### STEP 4

Insert the 5 hydraulic fittings from the hardware pack into the 5 threaded holes in the FPS-8 Power Steering Module.

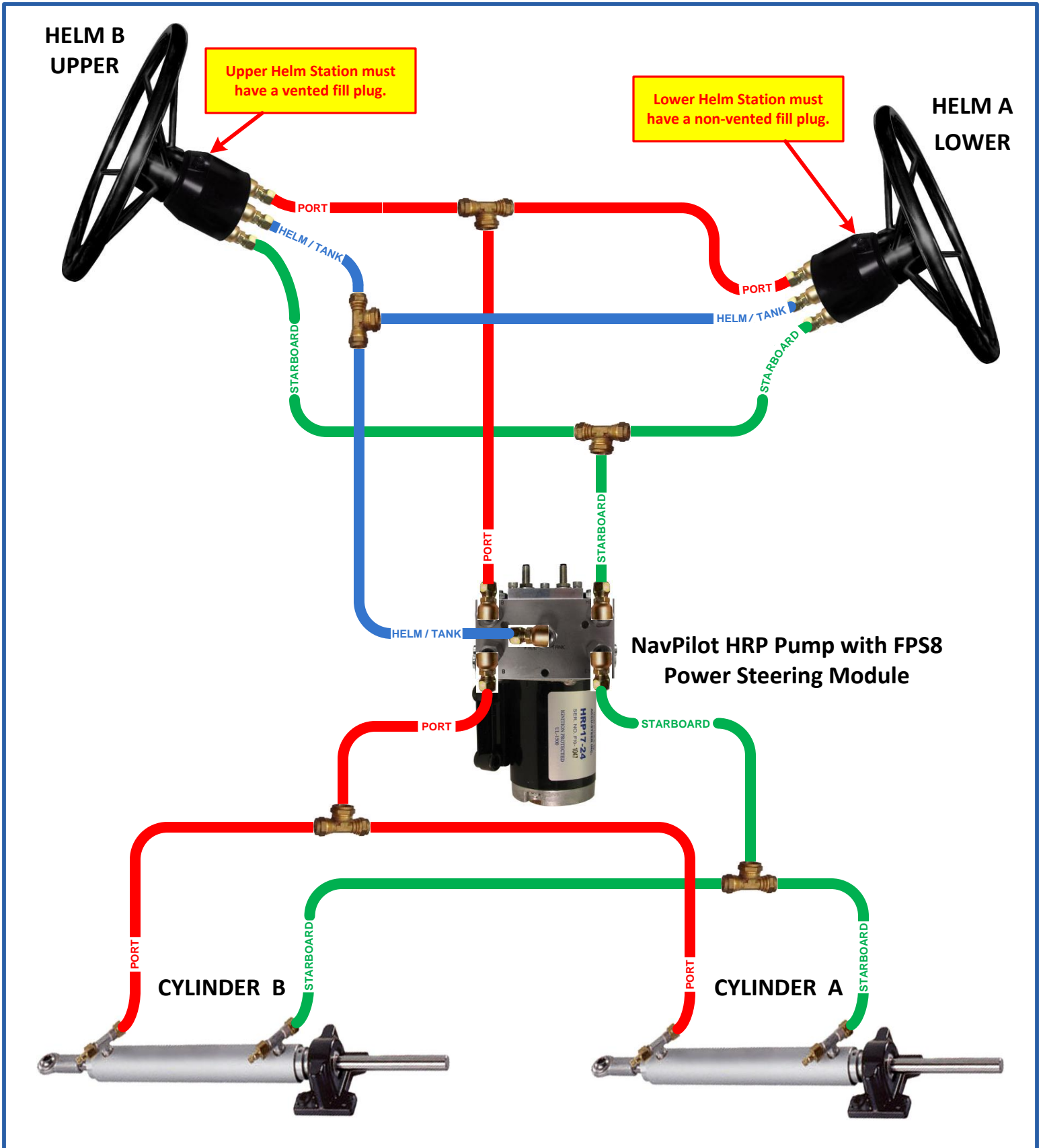
Please see the FPS-8 Installation Manual for more information regarding the hydraulic connections.



## Hydraulic Diagram - Single Helm & Single Ram

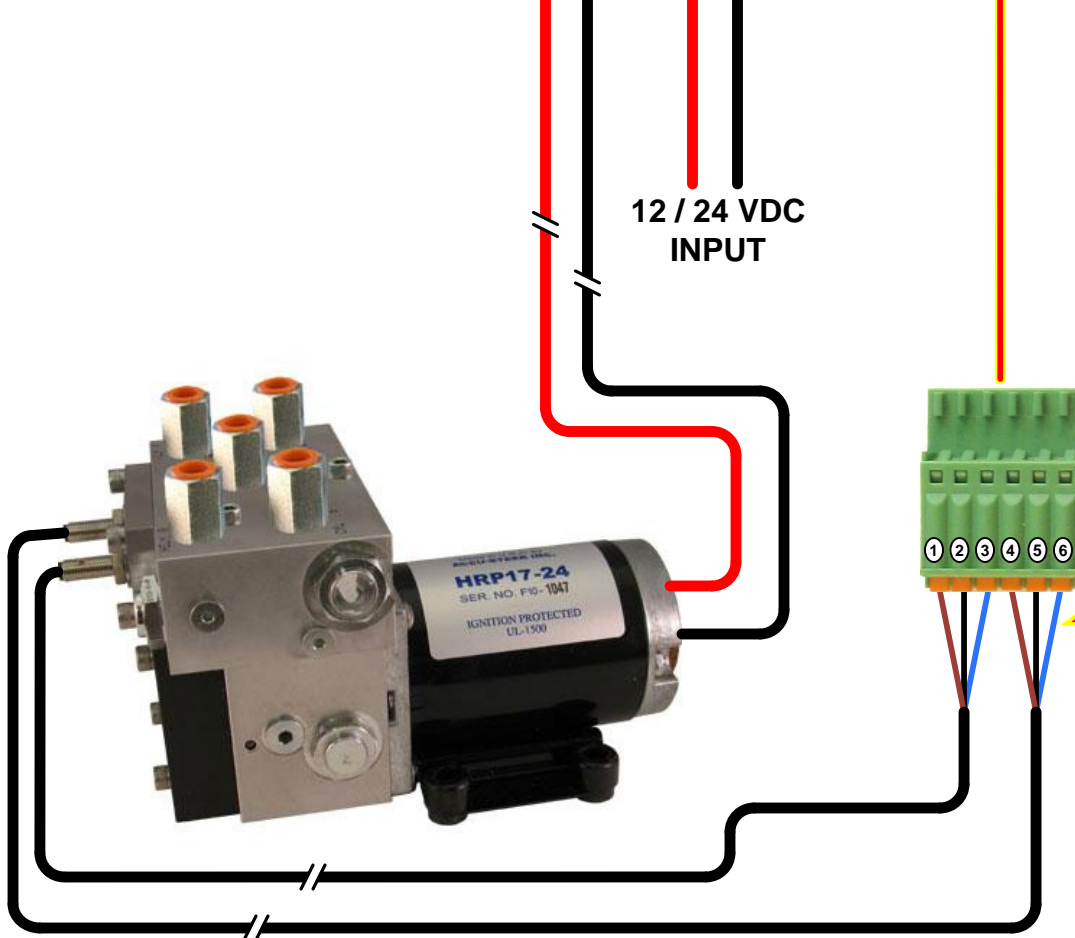
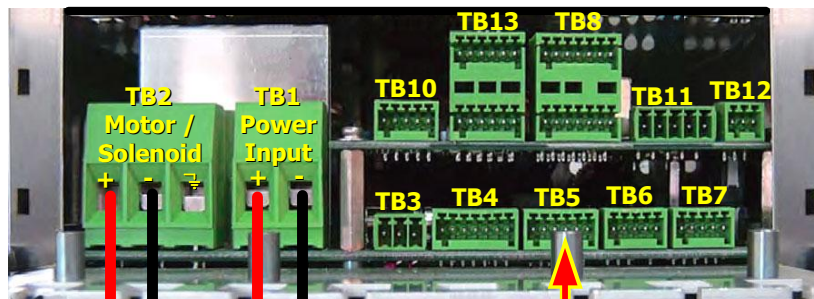


## Hydraulic Diagram - Dual Helm & Dual Cylinder



## Electrical Connection Diagram

### NavPilot 700 / 711 / 720 Processor (FAP-7002)



Each of the sensor cables has the same 3 wires. It does not matter which set of 3 go to pins 1, 2 & 3 or 4, 5 & 6. It only matters that the order of the wires are as follows:

#### To TB5

- Pin 1 = SW1 Brown
- Pin 2 = SW1 Black
- Pin 3 = SW1 Blue
- Pin 4 = SW2 Brown
- Pin 5 = SW2 Black
- Pin 6 = SW2 Blue